



Gold Apollo Co., Ltd.

Alpha-Numeric Display Pager

MODEL : AL-A28



PAGER PROGRAMMING GUIDE

Contents

GETTING STARTED	1
EQUIPMENT REQUIRED	1
EQUIPMENT SETUP	1
INSTALLING PROGRAMMER SOFTWARE	3
INSTALLATION	3
RUNNING	6
ALA28 PROGRAMMING	7
INTRODUCTION	7
STARTING THE PROGRAMMER	7
CODE AND FEATURES MENU	9
<i>Frequency</i>	9
<i>Capcode (Decimal Address)</i>	10
<i>Message Type Status</i>	12
<i>Auto Increase 1 after write</i>	14
ALERT AND STATUS	15
<i>Alerts and Status</i>	15
<i>Manu Of Pager</i>	18
<i>Manual Write</i>	20
<i>Prompts</i>	20
PROMPTS EDIT	21
SOURCE PROMPTS	22
FILE OPEN (CTRL + O)	23
FILE SAVE (CTRL + S)	23
FILE EXIT (CTRL + E)	24
PAGER READ (F3)	24
PAGER WRITE (F4)	25
ABOUT	26

Getting Started

The ALA28 Pager Programming software, provides the flexibility to program ALA28 pagers to meet individual requirements. To obtain the best results from the product, please take a few minutes to read this instruction guide.

Equipment Required

To install and operate the programmer, you need a system that meets the following minimum requirements:

- An personal computer (PC) with printer port, or compatible
- Windows 98 SE or above operating system (XP Recommended)
- 256 MB of RAM
- ALA28 Programmer
- A DB25 male-male printer cable
- ALA28 Pager Programming Software

Equipment Setup

Refer to Figure 1 while performing the follows:

1. At the rear of the PC, connect the DB25 male-male interface cable to the printer port on your computer.
2. Plug end of the DB25 cable into the ALA28 programmer.
3. Hardware installation is complete.

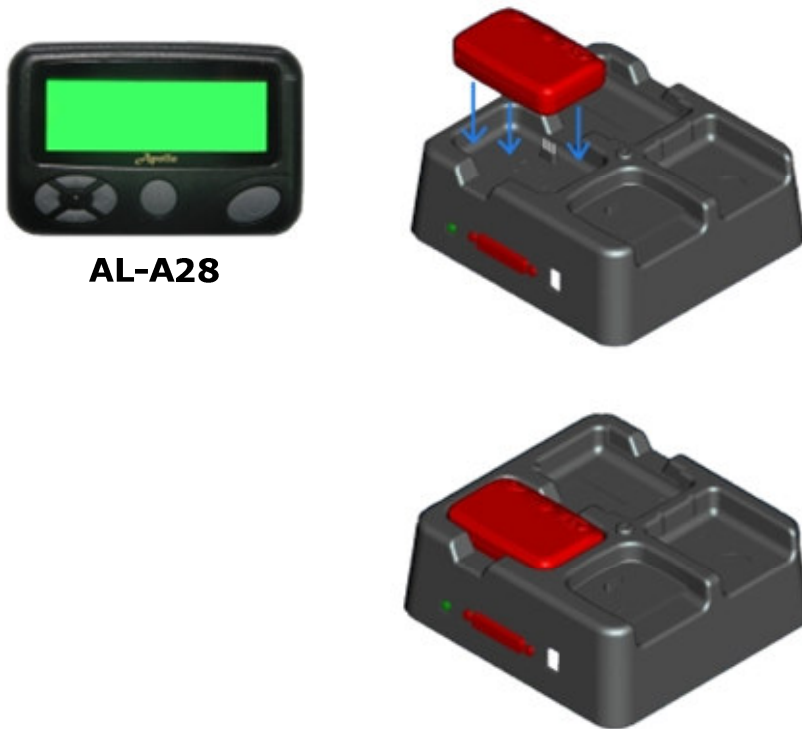
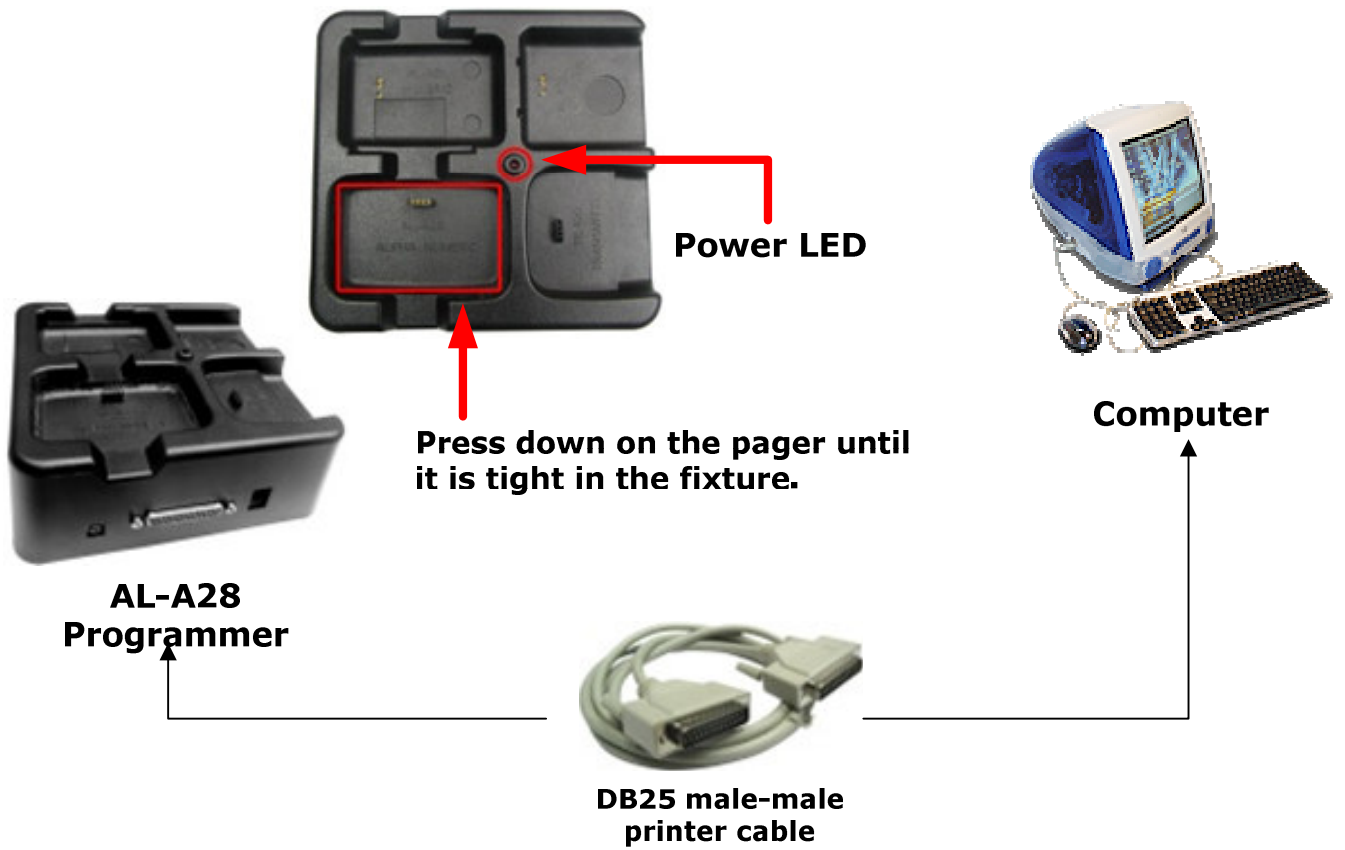


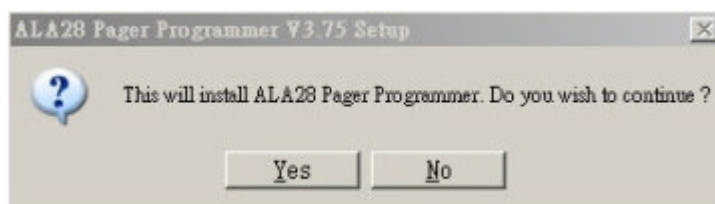
Figure 1 Programmer Hardware Connections

Installing Programmer Software

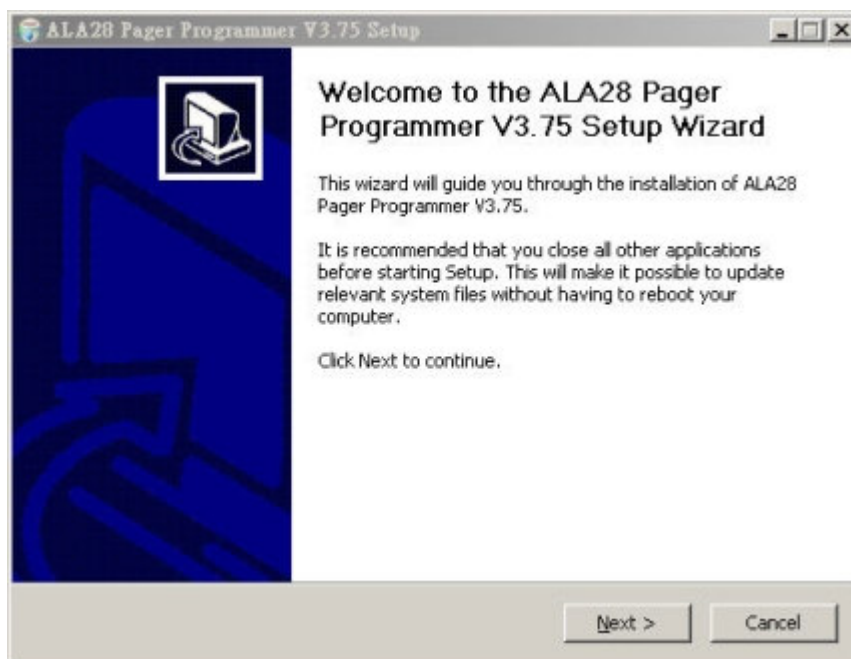
Installation

Install the programmer software into a PC as follows:

1. Uncompress the ALA28V375.zip and save them in a temporary directory.
2. Double click the setup.exe file. Click on "Y".



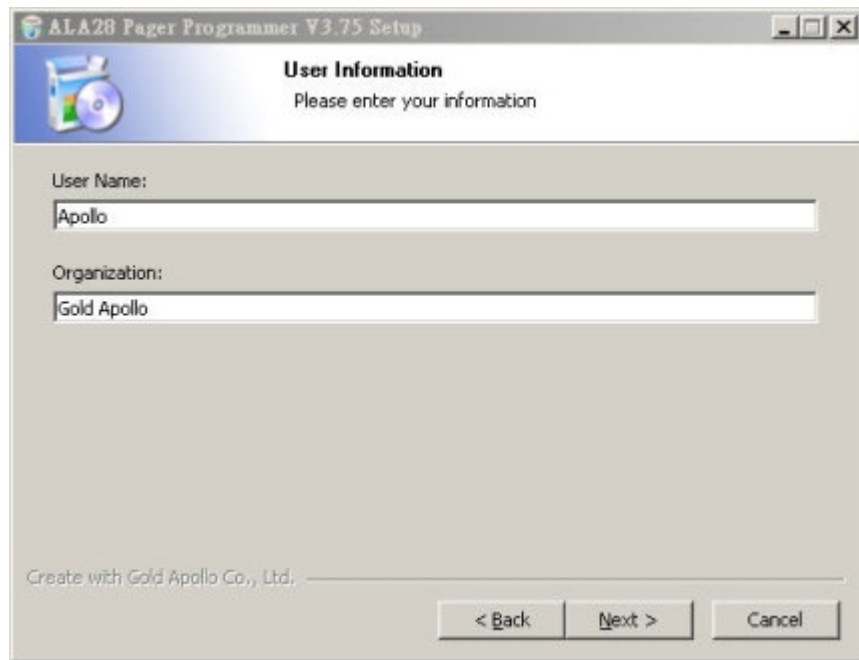
3. Click "Next" on the Welcome screen.



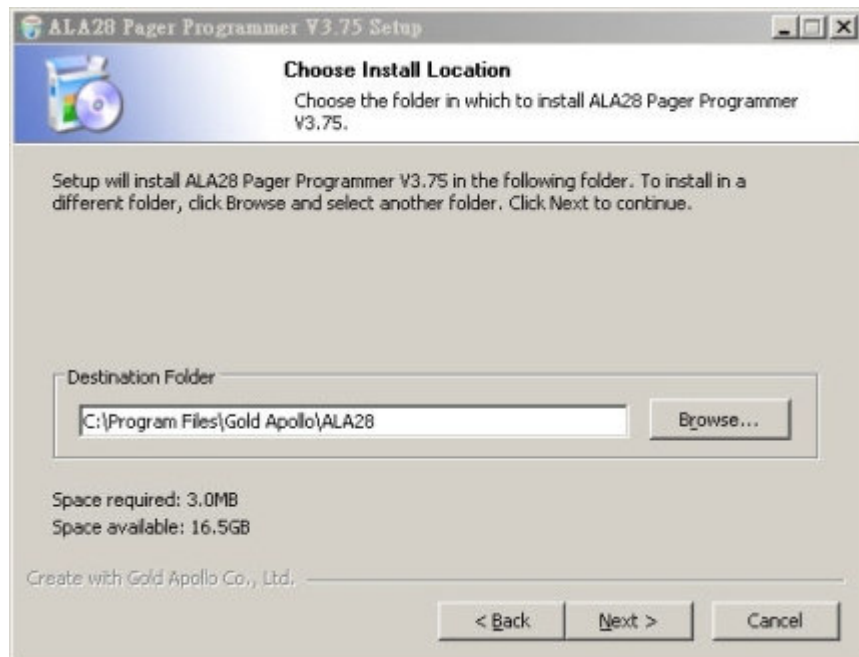
4. Enter your user information and click "Next".

(Note: you must enter at least a single character "into the company field)

Installing Programmer Software

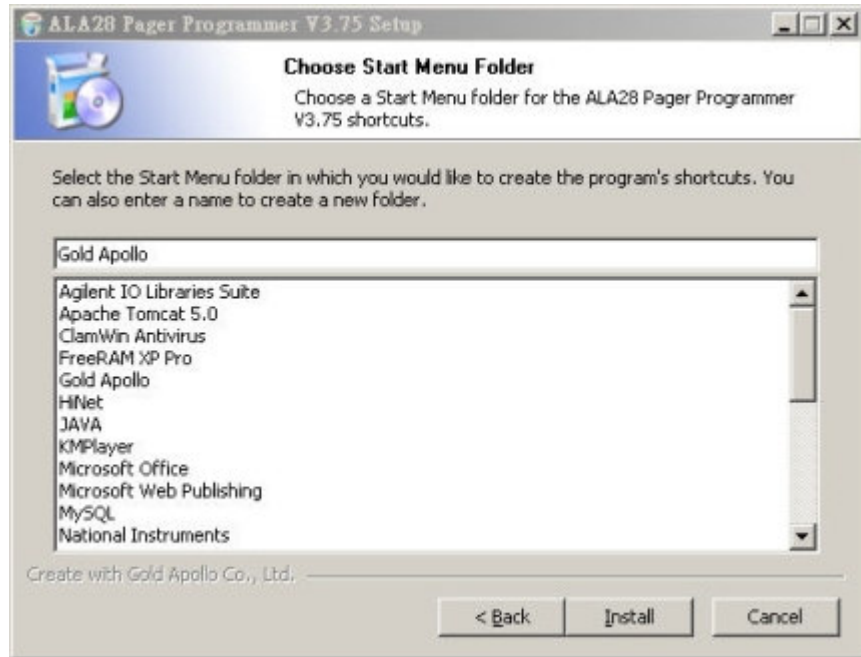


5. Choose where the program should be installed and click “Next”.

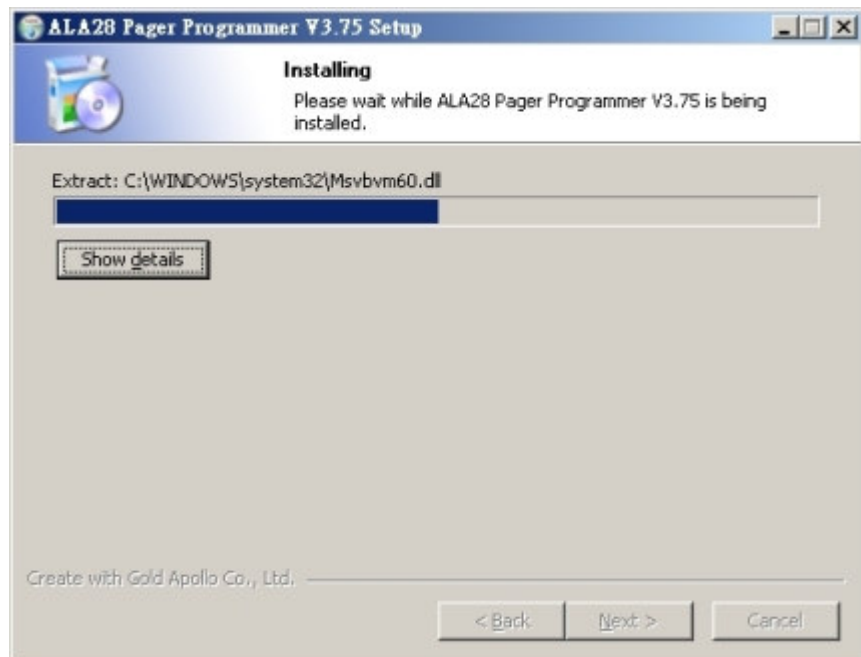


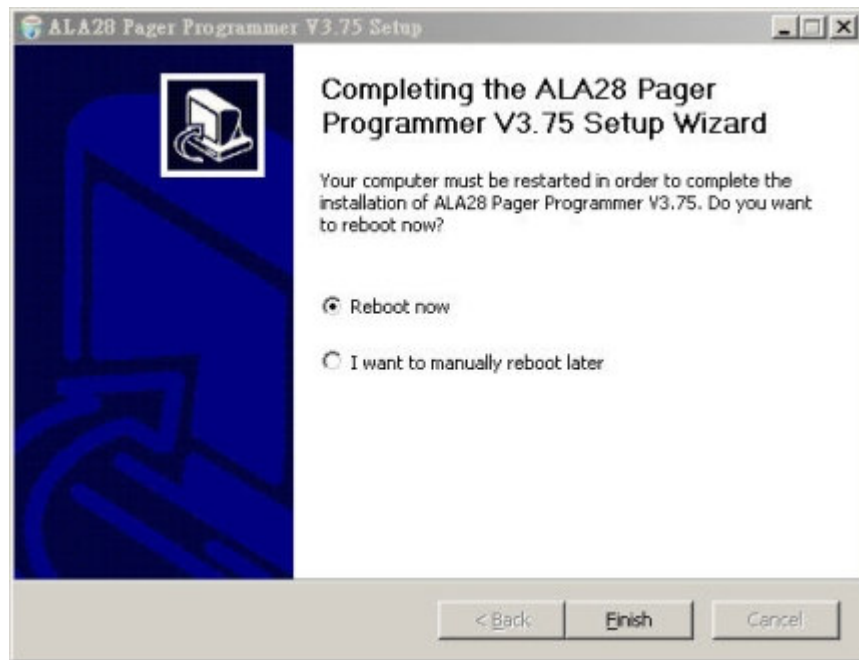
6. On the Select Program Folder screen choose where you would like the program to show up in your start menu and click “Install”.

Installing Programmer Software



7. Click “Finish” on the Setup Complete screen.





Running

**You now have the program installed. To run it from the Start menu/
Programs/ Gold Apollo /ALA28 Pager Programmer**

ALA28 Programming

Introduction

Preparing a Pager for Reading or Programming:

- Establish a computer hardware configuration.
- Run the programming software of ALA28.
- A Power LED illuminates on the Programming Interface to indicate proper contact. If the Power LED did not illuminate then you must check the configuration and restart the programming software of ALA28.
- Align the pager contact pin holes with the contact pins of the ALA28 Programmer.
- Press down on the pager until it is tight in the fixture.
- Turn the pager off or wait the pager until standby mode. The pager is now ready to read or program.

Starting the Programmer

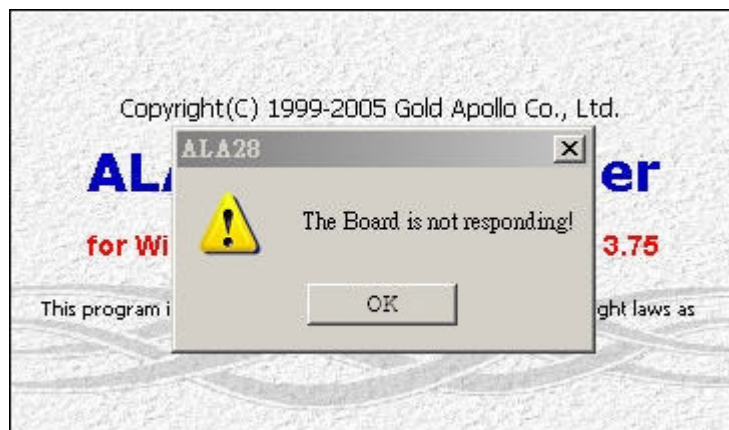
The application can be launched from Start → Programs → Gold Apollo → ALA28 Pager Programmer. The following window appears



Input your password. If key in wrong password for 3 times, the system shuts off automatically. If the password is correct, the following window appears :

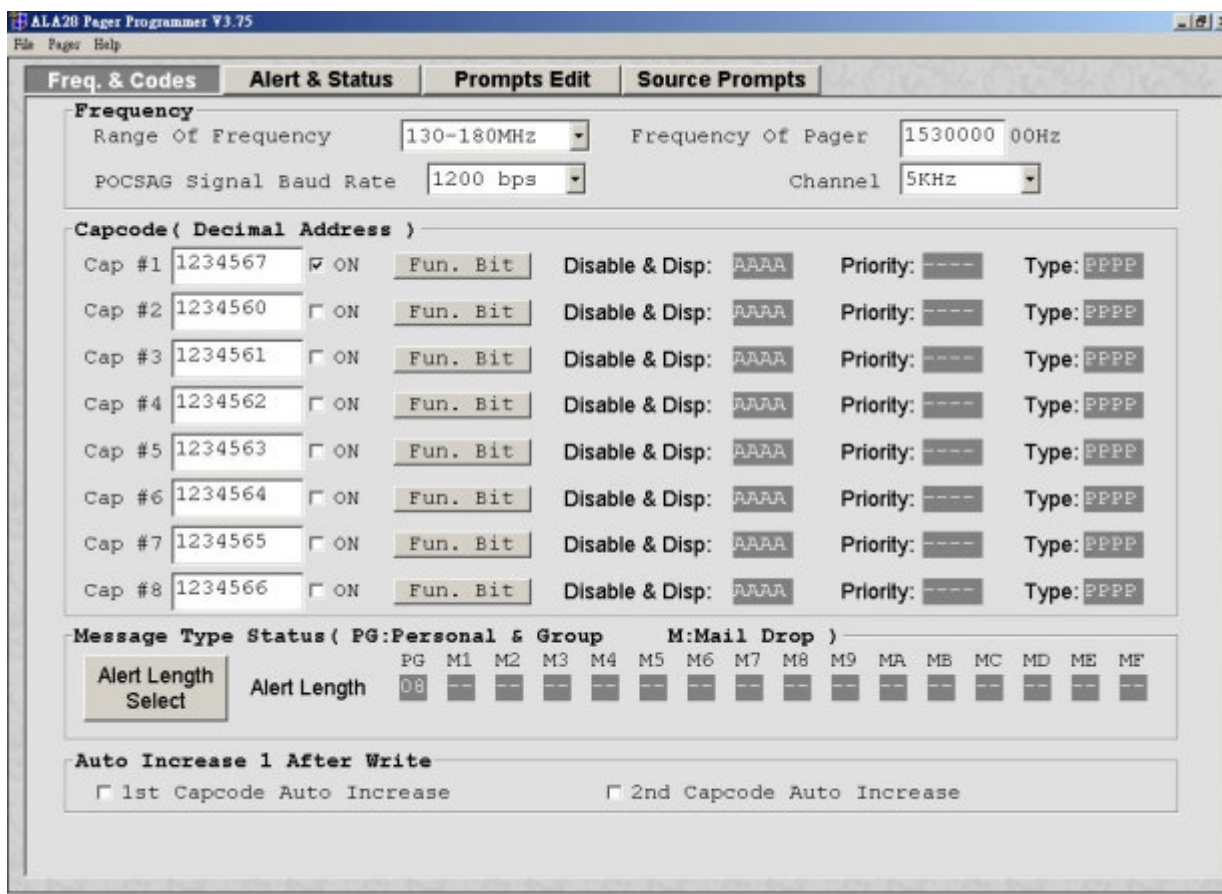


Now, the system examines that the ALA28 programmer is well installed. If any questions, the following window appears :

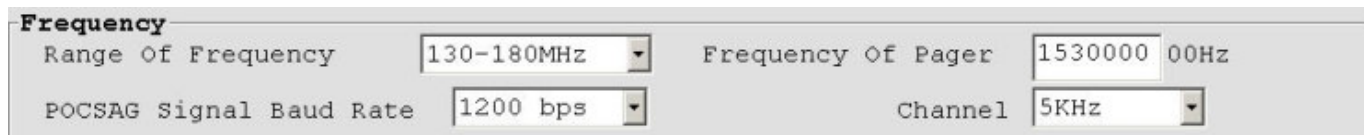


Please re-check the ALA28 programmer and printer port are well installed or not. If connection successfully with the ALA28 programmer. The system enters the Code and Features Menu •

Code and Features Menu



Frequency



- Range Of Frequency

You can select the range of frequency and all setting will load default value.

- Frequency Of Pager 00Hz

The frequency is on which the pager operates.

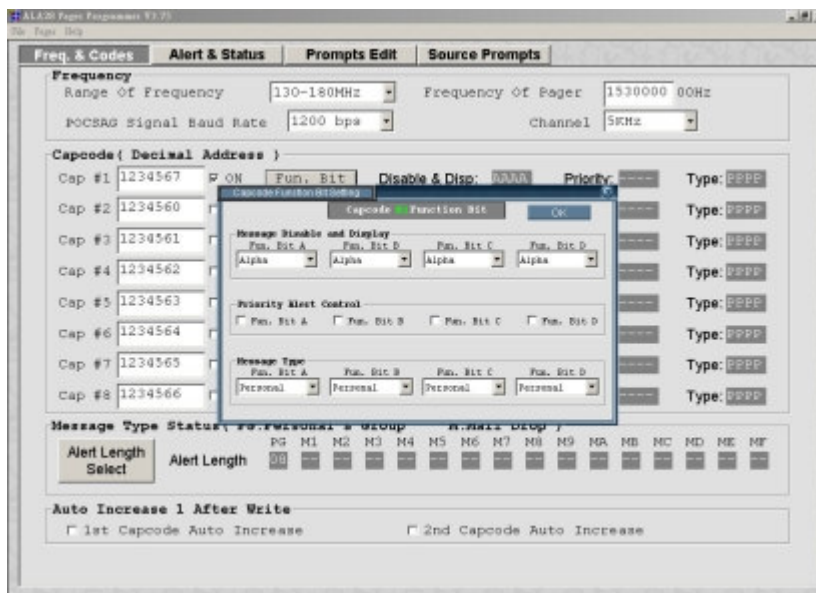
- POCSAG Signal Baud Rate

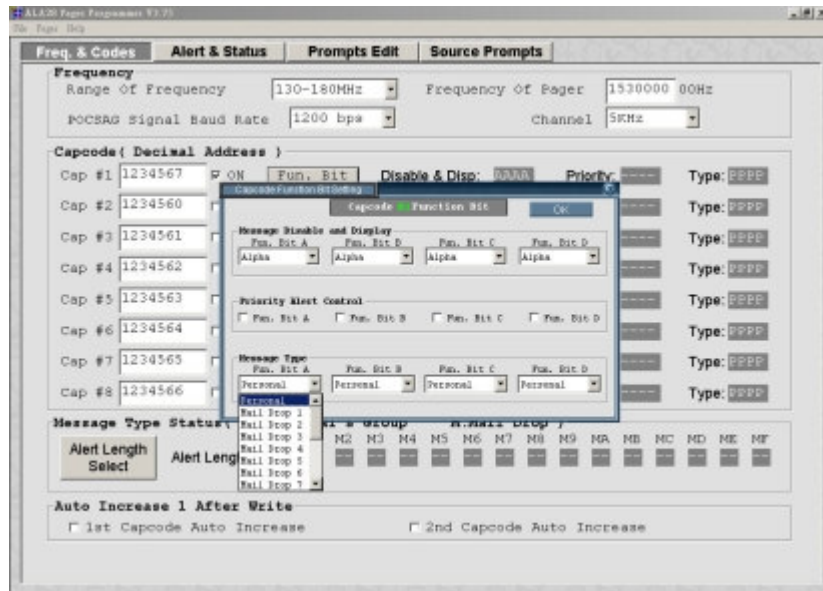
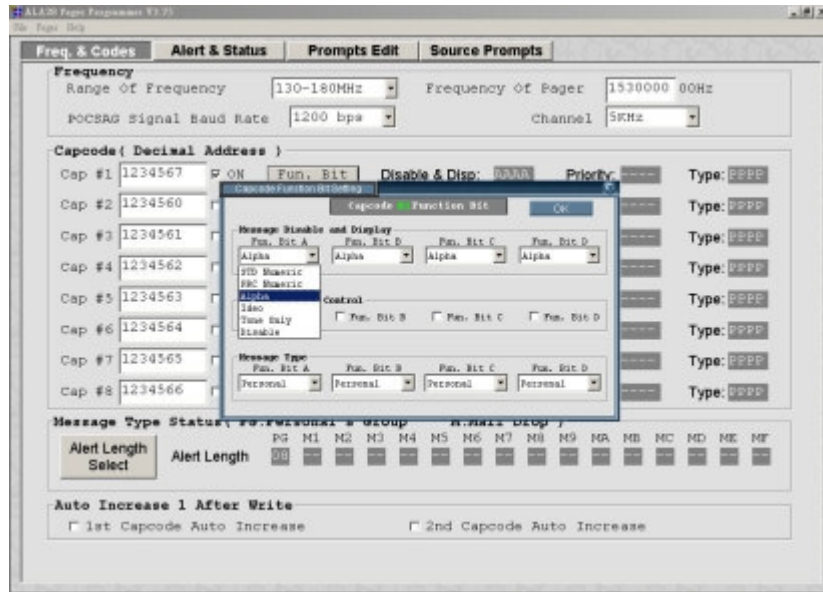
The baud rate is on which the pager operates.

Capcode (Decimal Address)

Capcode (Decimal Address)	ON	Fun. Bit	Disable & Disp:	Priority:	Type:
Cap #1 1234567	<input checked="" type="checkbox"/>	Fun. Bit	AAAA	----	PPPP
Cap #2 1234560	<input type="checkbox"/>	Fun. Bit	AAAA	----	PPPP
Cap #3 1234561	<input type="checkbox"/>	Fun. Bit	AAAA	----	PPPP
Cap #4 1234562	<input type="checkbox"/>	Fun. Bit	AAAA	----	PPPP
Cap #5 1234563	<input type="checkbox"/>	Fun. Bit	AAAA	----	PPPP
Cap #6 1234564	<input type="checkbox"/>	Fun. Bit	AAAA	----	PPPP
Cap #7 1234565	<input type="checkbox"/>	Fun. Bit	AAAA	----	PPPP
Cap #8 1234566	<input type="checkbox"/>	Fun. Bit	AAAA	----	PPPP

- **Cap #1**
Please input 1st Capcode (7 Dec digits between 8 and 2097151).
- **ON**
Enable or disable 2nd Capcode (address).
- **Fun. Bit**
Click to set function bit(A、B、C、D) message control.





- **Disable & Disp:** PAAA
- Function Bit(A、B、C、D) Message Display:**
- N:** STD Number.
- P:** PRC Number.
- A:** Alpha number.
- I:** Ideographic.
- T:** Tone only
- D:** Disable

- Priority: ----

Function Bit(A、B、C、D) Priority Alert: V is Enable, - is disable.

- Type: PPPP

Function Bit(A、B、C、D) Message Type:

P: Personal.

1 to 9: Mail Drop 1 to Mail Drop 9.

A to E: Mail Drop A to Mail Drop E.

G: Group.

Message Type Status

Message Type Status (PG:Personal & Group		M:Mail Drop)														
	PG	M1	M2	M3	M4	M5	M6	M7	M8	M9	MA	MB	MC	MD	ME	MF
Alert Length Select	Alert Length	08	--	--	--	--	--	--	--	--	--	--	--	--	--	--

- Alert Length Select

Click to set personal and mail drop(1-9、A~E) alert length.

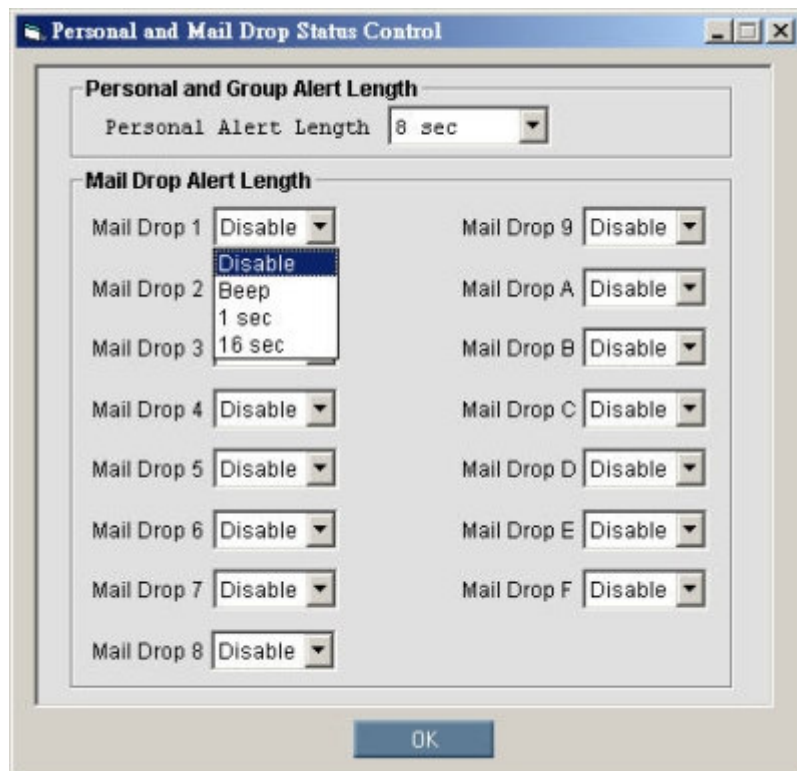
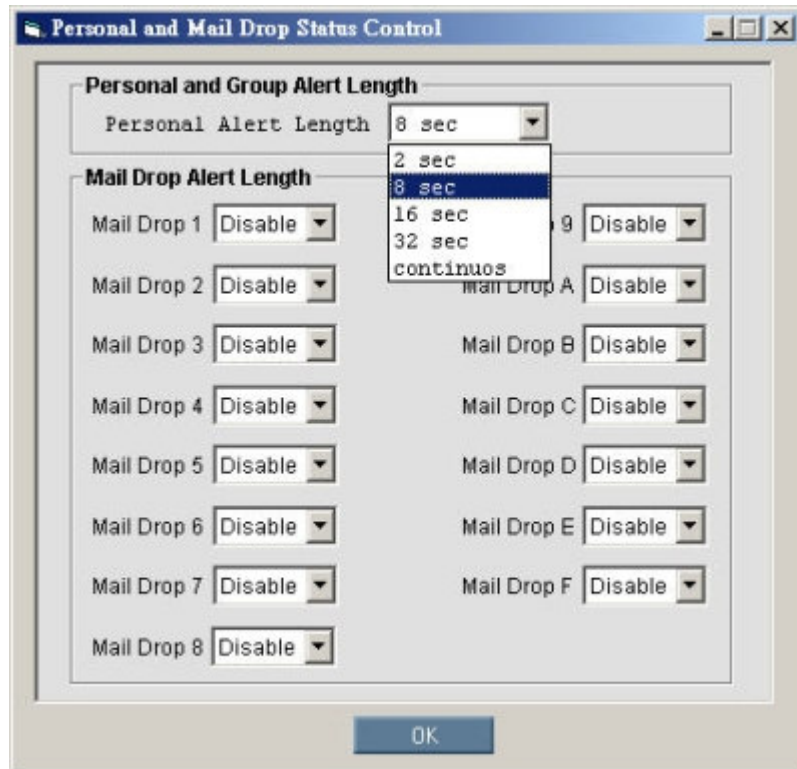
Personal and Mail Drop Status Control

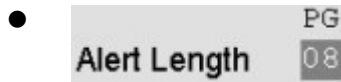
Personal and Group Alert Length
 Personal Alert Length: 8 sec

Mail Drop Alert Length

Mail Drop 1	Disable	Mail Drop 9	Disable
Mail Drop 2	Disable	Mail Drop A	Disable
Mail Drop 3	Disable	Mail Drop B	Disable
Mail Drop 4	Disable	Mail Drop C	Disable
Mail Drop 5	Disable	Mail Drop D	Disable
Mail Drop 6	Disable	Mail Drop E	Disable
Mail Drop 7	Disable	Mail Drop F	Disable
Mail Drop 8	Disable		

OK





The available selections for all personal and group call messages alerts are:

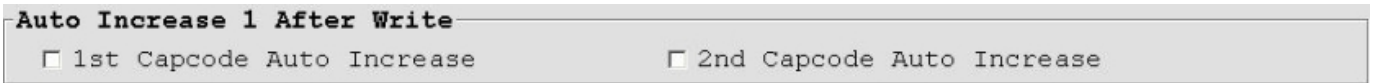
- 02: 2 sec.
- 08: 8 sec.
- 16: 16 sec.
- 32: 32 sec.
- CT: continuous.



The available selections for mail drop messages alerts are:

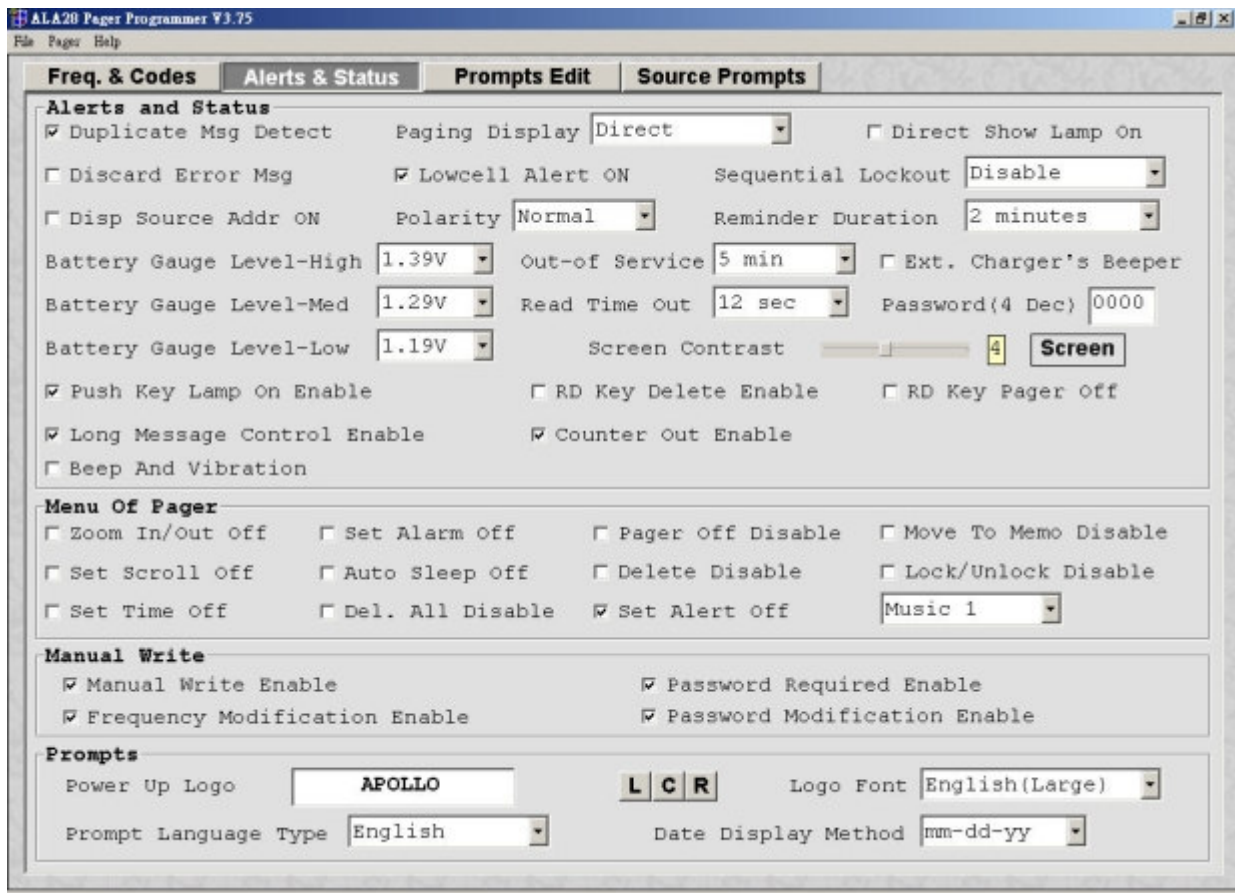
- : Disable.
- BP: Short Beep.
- 01: 1 sec.
- 16: 16 sec.

Auto Increase 1 after write



- 1st Capcode Auto Increase
1st capcode always increment by one after write.
- 2nd Capcode Auto Increase
2nd capcode always increment by one after write.

Alert and Status



Alerts and Status

- Duplicate Msg Detect

If it is selected, duplication detection is performed on all personal messages with the same message type as the new message, on a character by character basis. Error characters are ignored during the check. If all non-error characters in both messages match, the existing matching message is flagged as a duplicate. The message with the least number of errors is stored and the other messages are discarded. Duplication is not performed on mail-drop messages.

- Discard Error Msg

If it is selected, error message will be discarded.

- Disp Source Addr ON

If it is selected, the message will show the address source at last.

- ▾

This value represents the battery voltage level necessary for the battery gauge to display a full battery. If the battery voltage is higher or equal to this value, the full battery gauge icon is displayed. Valid selections are: 1.58V, 1.53V, 1.48V, 1.43V, 1.39V, 1.35V, 1.29V, 1.23V, 1.19V, 1.14V, 1.09V, 1.05V, and 1.00V. The High level must be greater than the Med level, and the Med level Must be greater than the Low level. None of the levels can be equal to each other.

- ▾

This value represents the battery voltage level necessary for the battery gauge to display a full battery. If the battery voltage is higher or equal to this value, the full battery gauge icon is displayed. Valid selections are: 1.58V, 1.53V, 1.48V, 1.43V, 1.39V, 1.35V, 1.29V, 1.23V, 1.19V, 1.14V, 1.09V, 1.05V, and 1.00V. The High level must be greater than the Med level, and the Med level Must be greater than the Low level. None of the levels can be equal to each other.

- ▾

This value represents the battery voltage level necessary for the battery gauge to display a full battery. If the battery voltage is higher or equal to this value, the full battery gauge icon is displayed. Valid selections are: 1.58V, 1.53V, 1.48V, 1.43V, 1.39V, 1.35V, 1.29V, 1.23V, 1.19V, 1.14V, 1.09V, 1.05V, and 1.00V. The High level must be greater than the Med level, and the Med level Must be greater than the Low level. None of the levels can be equal to each other.

- Push Key Lamp On Enable

If it is selected, the back-light will turn on after any key be pressed.

- RD Key Delete Enable

If it is selected, the RD key can use as delete feature at read message moment.

- RD Key Pager Off

If it is selected, the RD key can use as Pager off feature at time display moment.

- Long Message Control Enable

If it is selected, then the message most length is 2,000 characters, otherwise the length only can be 300 characters.

- Beep And Vibration

If it is selected, beep and vibration will active together.

- Counter Out Enable

If it is selected, the message will indicate the counter number at first.

- Paging Display
 - Direct
 - Page Count
 - Direct

If “Direct” is selected then the message will show on the display at a message received. Otherwise it only shows a message location icon on the display.

- Direct Show Lamp On

When the paging display is “Direct”, if it is selected, the back-light will turn on at a message received.

- Lowcell Alert ON

If it is selected, the pager emits a, low battery cell alert when the battery reaches a low cell state.

- Polarity

It select the RF signal polarity is normal or invert.

- Out-of Service

With an out-of-service time specified by the code plug, the pager is considered “out of service” when it does not detect a POCSAG synchronization word for that time period. The out-of-service icon displays at this time. Valid selections are: disabled, 1 min, 2 min, 5 min and 10 min.

- Ext. Charger's Beeper

If it is selected, the external buzzer in the charger will turn on at the same time with the internal pager’s beep.

- Read Time Out

The current pager display changes after the selected time frame has expired. Valid selections are: 8 sec, 12 sec, 20 sec and 30 sec.

- Screen Contrast

It selects the LCD display contract level.

- Sequential Lockout

The value is a sequential lockout timer begins when a message arrives and is flagged as being sequentially locked out. If duplicate messages arrive, one of the messages is disregarded and not flagged as a duplicate. Valid selections are disabled, 30 seconds, 60 seconds, 120 seconds, 175 seconds and 240 seconds.

- Reminder Duration

With this option selected, the time period begins with a newly arrived message and is reset every time a new message is received. Once the time period expires, the pager does not emit any more reminder alerts until a new message arrives. Valid time period selections are: Disable, 2 minutes, 10 minutes and 60 minutes.

- Password(4 Dec)

It is used for the user's manual programming.

Manu Of Pager

Menu Of Pager			
<input type="checkbox"/> Zoom In/Out Off	<input type="checkbox"/> Set Alarm Off	<input type="checkbox"/> Pager Off Disable	<input type="checkbox"/> Move To Memo Disable
<input type="checkbox"/> Set Scroll Off	<input type="checkbox"/> Auto Sleep Off	<input type="checkbox"/> Delete Disable	<input type="checkbox"/> Lock/Unlock Disable
<input type="checkbox"/> Set Time Off	<input type="checkbox"/> Del. All Disable	<input type="checkbox"/> Set Alert Off	

- Zoom In/Out Off

If it is selected, menu of zoom function will be disabled.

- Set Scroll Off

If it is selected, menu of scroll is disabled.

- Set Time Off

If it is selected, menu of set time is disabled.

- Set Alarm Off

If it is selected, menu of set alarm is disabled.

- Auto Sleep Off

If it is selected, menu of auto sleep is disabled.

- Del. All Disable

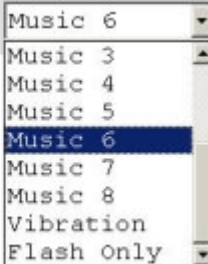
If it is selected, menu of delete all is disabled.

- Pager Off Disable

If it is selected, menu of pager off is disabled.

- Delete Disable

If it is selected, menu of delete is disabled.

- Set Alert Off
- 

If it is selected, menu of set alert is disabled then you must select one of 14 type alerts as your default.

- Move To Memo Disable

If it is selected, menu of move to memo is disabled.

- Lock/Unlock Disable

If it is selected, menu of lock/unlock is disabled.

Manual Write

Manual Write	
<input checked="" type="checkbox"/> Manual Write Enable	<input checked="" type="checkbox"/> Password Required Enable
<input checked="" type="checkbox"/> Frequency Modification Enable	<input checked="" type="checkbox"/> Password Modification Enable

- Manual Write Enable

If it is selected, manual write enable.

- Frequency Modification Enable

If it is selected, frequency modification is enabled at manual programming.

- Password Required Enable

If it is selected, enters manual programming password is required.

- Password Modification Enable

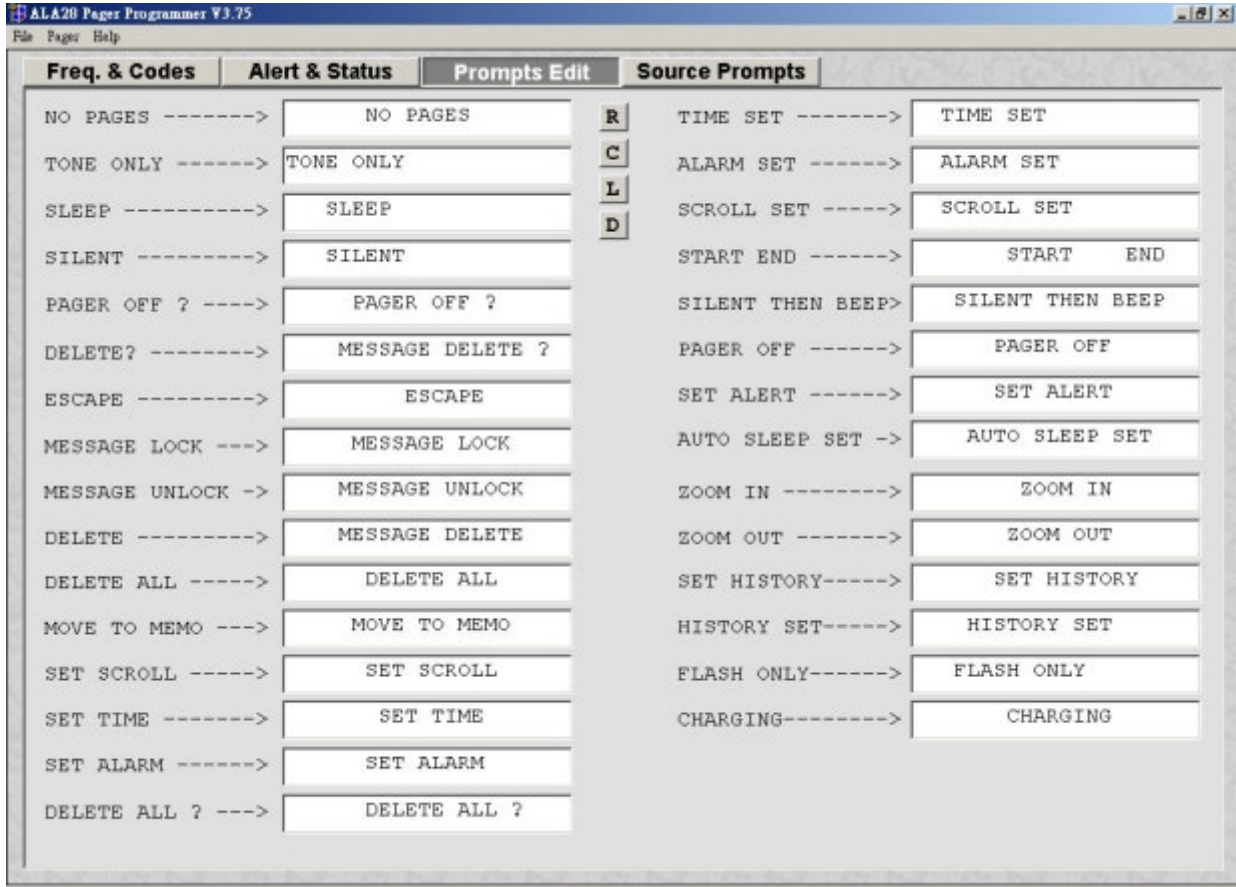
If it is selected, enters manual programming password can be modification.

Prompts

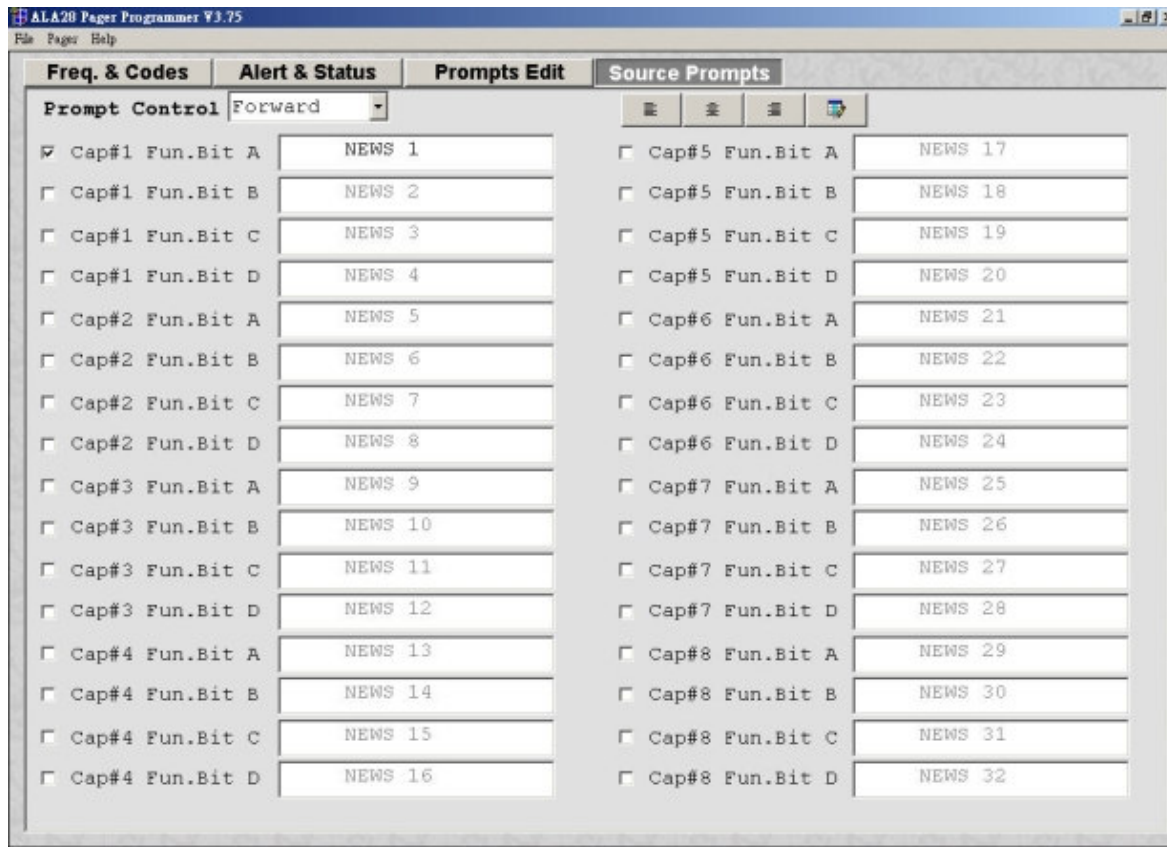
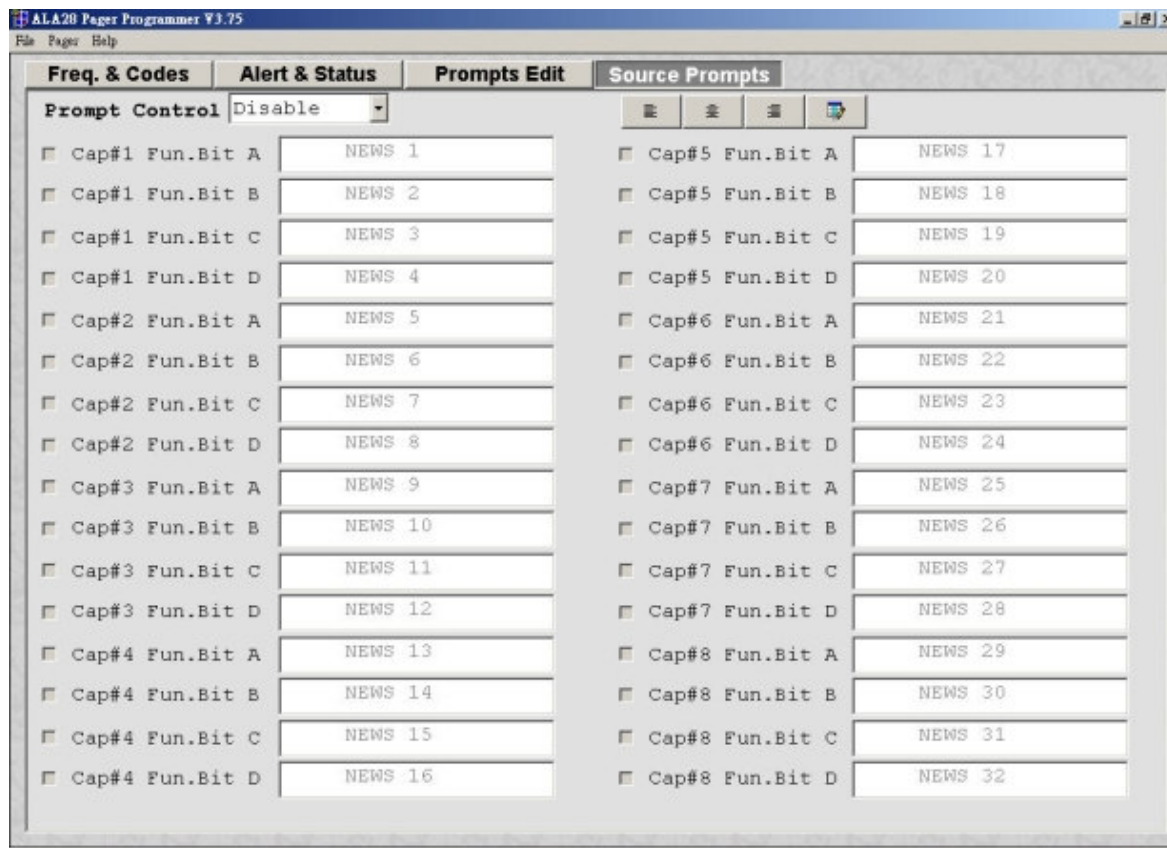
Prompts			
Power Up Logo	<input type="text" value="APOLLO"/>	<input type="text" value="L C R"/>	Logo Font <input type="text" value="English(Large)"/>
Prompt Language Type	<input type="text" value="English"/>	Date Display Method	<input type="text" value="mm-dd-yy"/>

Prompts Edit

Each prompt can be customized in the code plug, if desired, or the defaults can be used.



Source Prompts

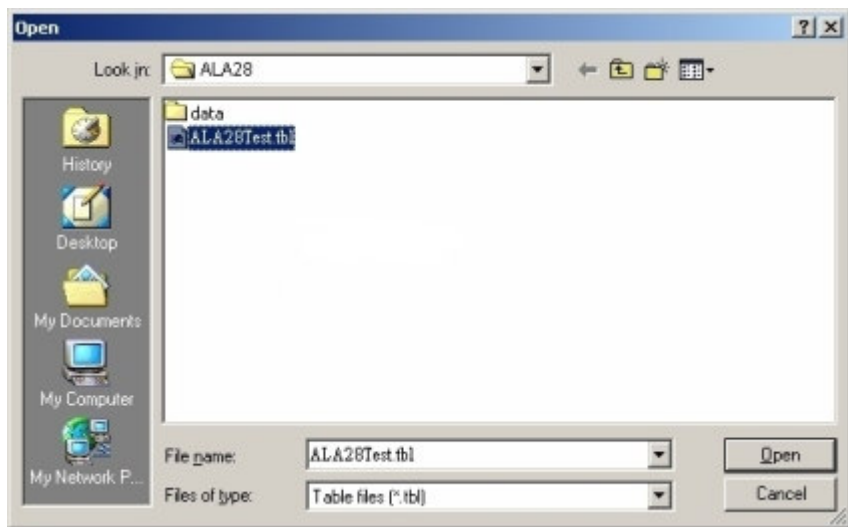




Each prompt can be customized in the code-lug, if desired, or the defaults can be used. If selected, the text programmed is displayed at the first of the message or end of message.

File | Open (Ctrl + O)

Click “Open” or “Ctrl + O” to open the ALA28 code-plug file. The file has the extension “.tbl”.



File | Save (Ctrl + S)

Click “Save” or “Ctrl + S”, save the current code-plug data to a file.

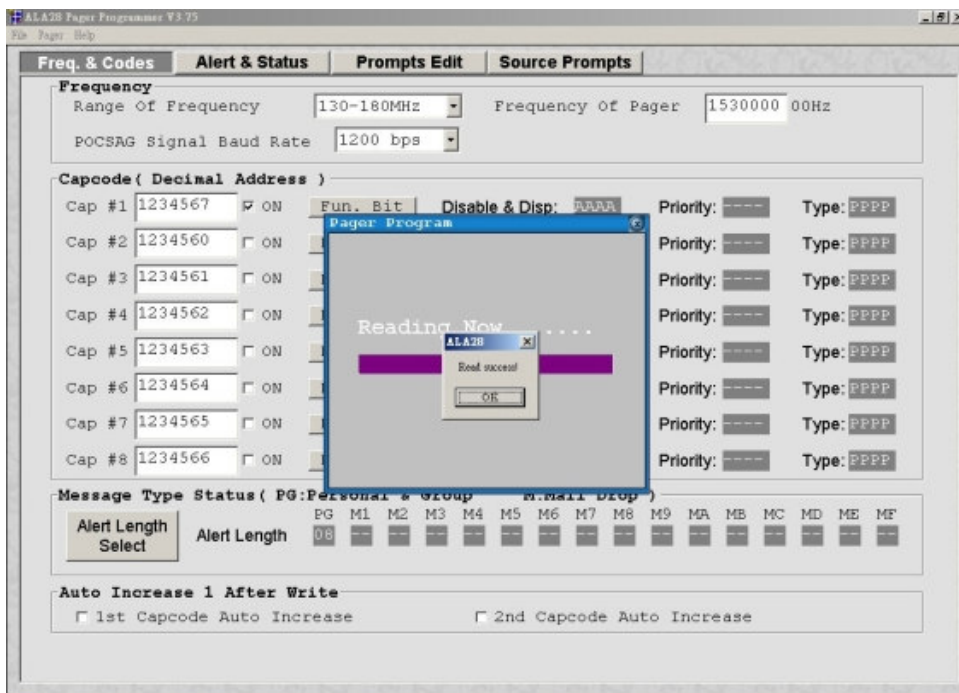
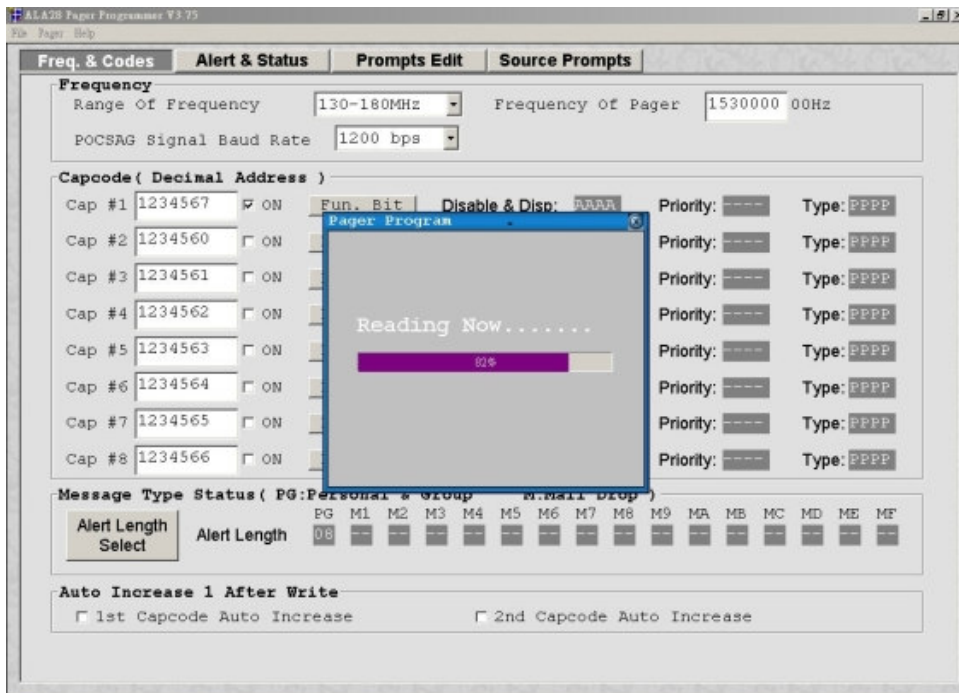


File | Exit (Ctrl + E)

Exit the programmer software.

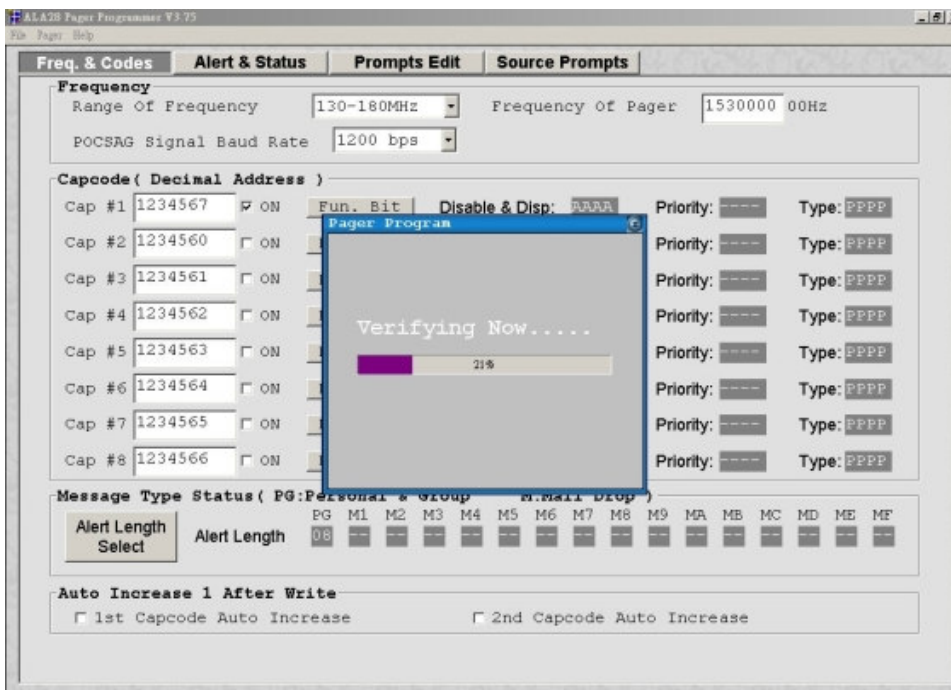
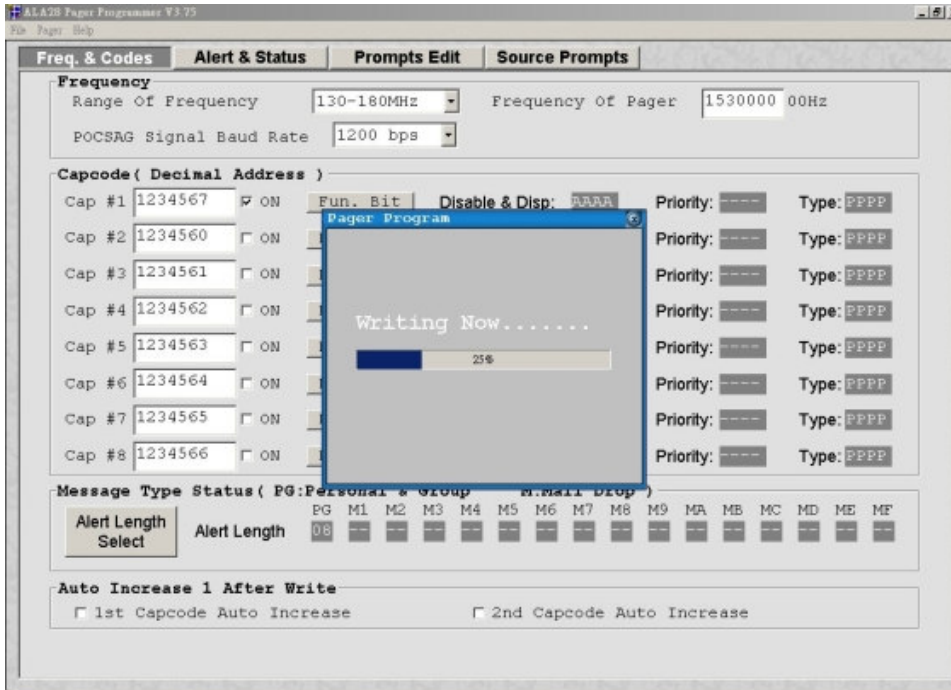
Pager | Read (F3)

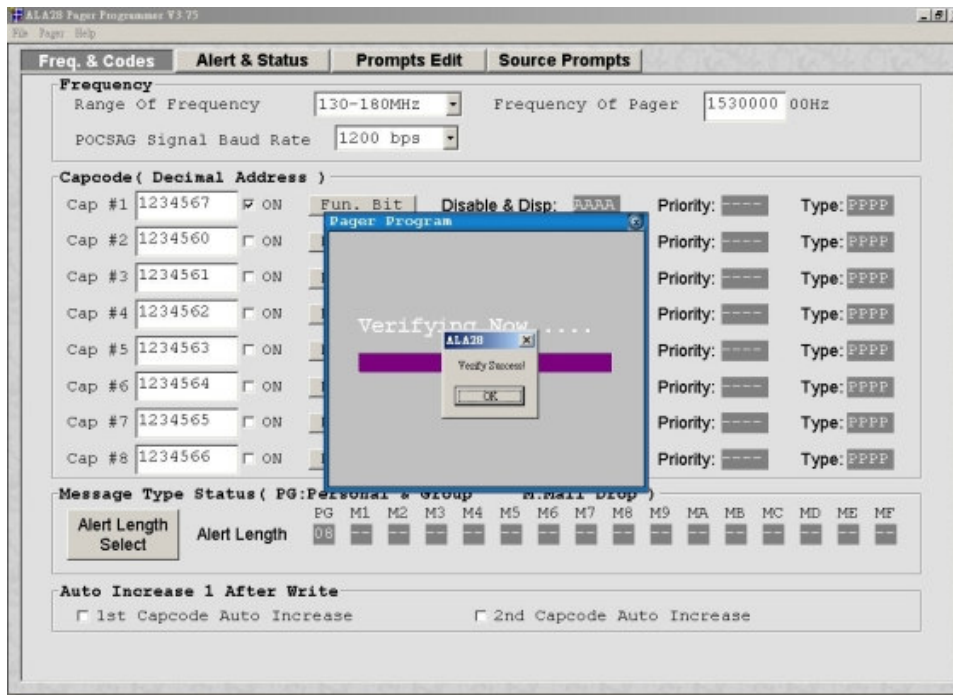
Click “Read” or press “F3” to read code-plug data from a ALA28. The status window shows reading process, when it's done, you will see a message window of 『 Read success 』 on the screen.



Pager | Write (F4)

Click “Write” or press “F4” to program the ALA28. The status window shows the writing process. When writing process finished, will starting verify process, when it is done, you will see a window of 『Verify success』 on the screen.





About

About the ALA28 Pager Programmer software information.

